

Toward Climate Resilience:

A Framework and Principles for Science-Based Adaptation

Erika Spanger-Siegfried, Union of Concerned Scientists

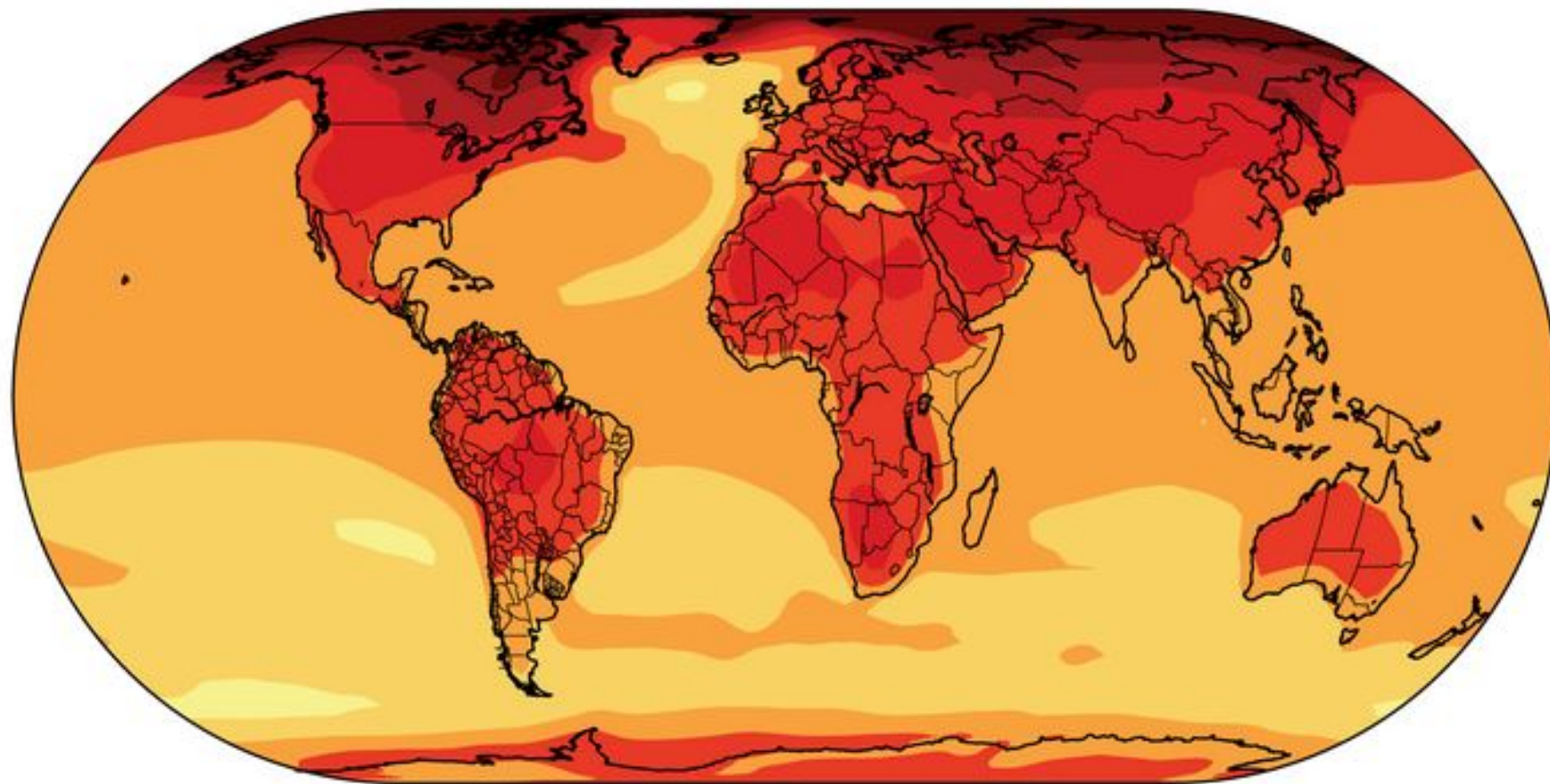
Science for a healthy planet and safer world.

[Union of
Concerned Scientists]



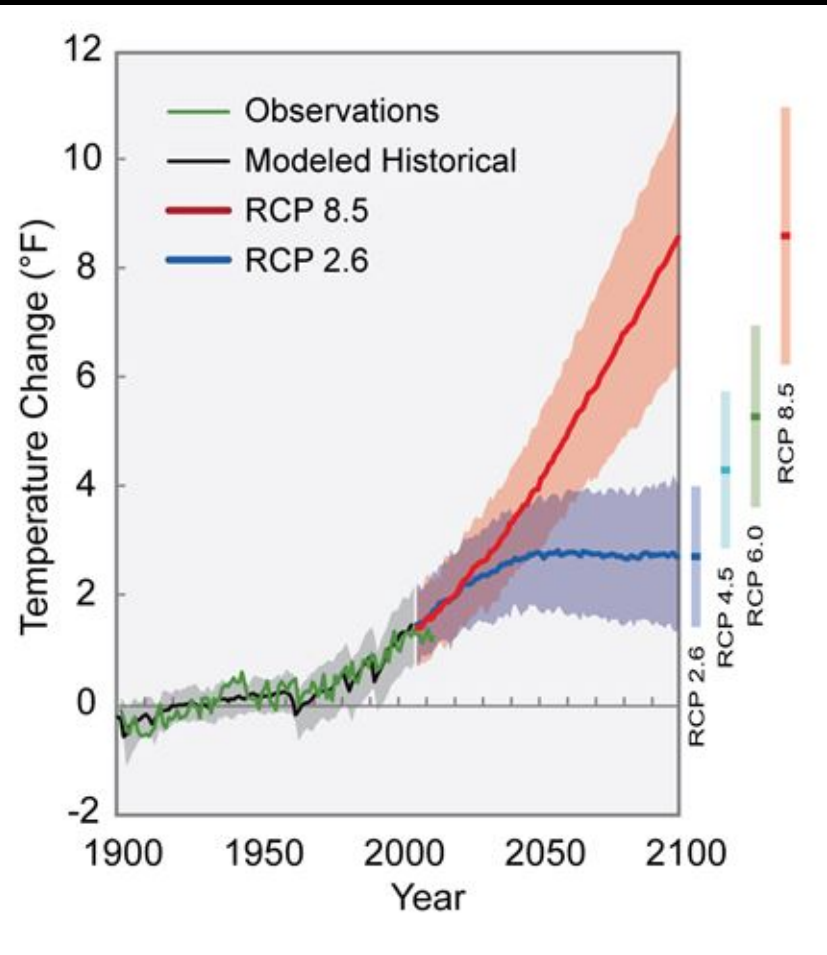
RAPID EMISSIONS REDUCTIONS (RCP 2.6)

CONTINUED EMISSIONS INCREASES (RCP 8.5)



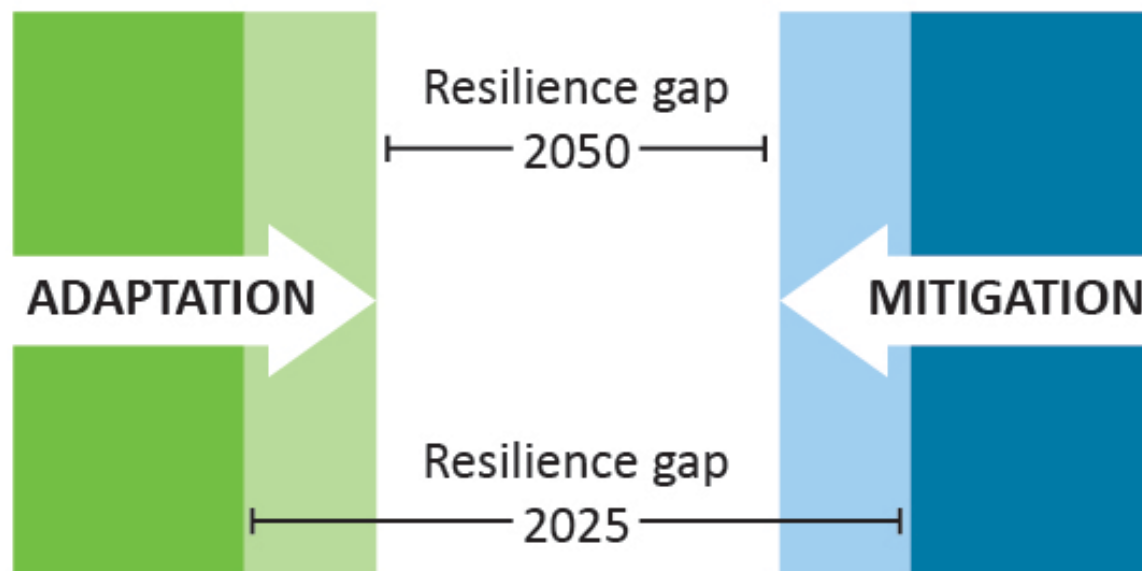
Temperature Change (°F)





[Climate impacts in a warming world





An aerial photograph of a coastal wetland area. A central waterway, possibly a canal or a natural channel, runs vertically through the center of the image. The water is a deep blue-grey color. On either side of the waterway, there are patches of green marshland and some small, light-colored structures that appear to be buildings or small houses. The background shows a vast expanse of water meeting a hazy horizon under a pale sky.

If we need to adapt,
how do we ensure we do it well....?

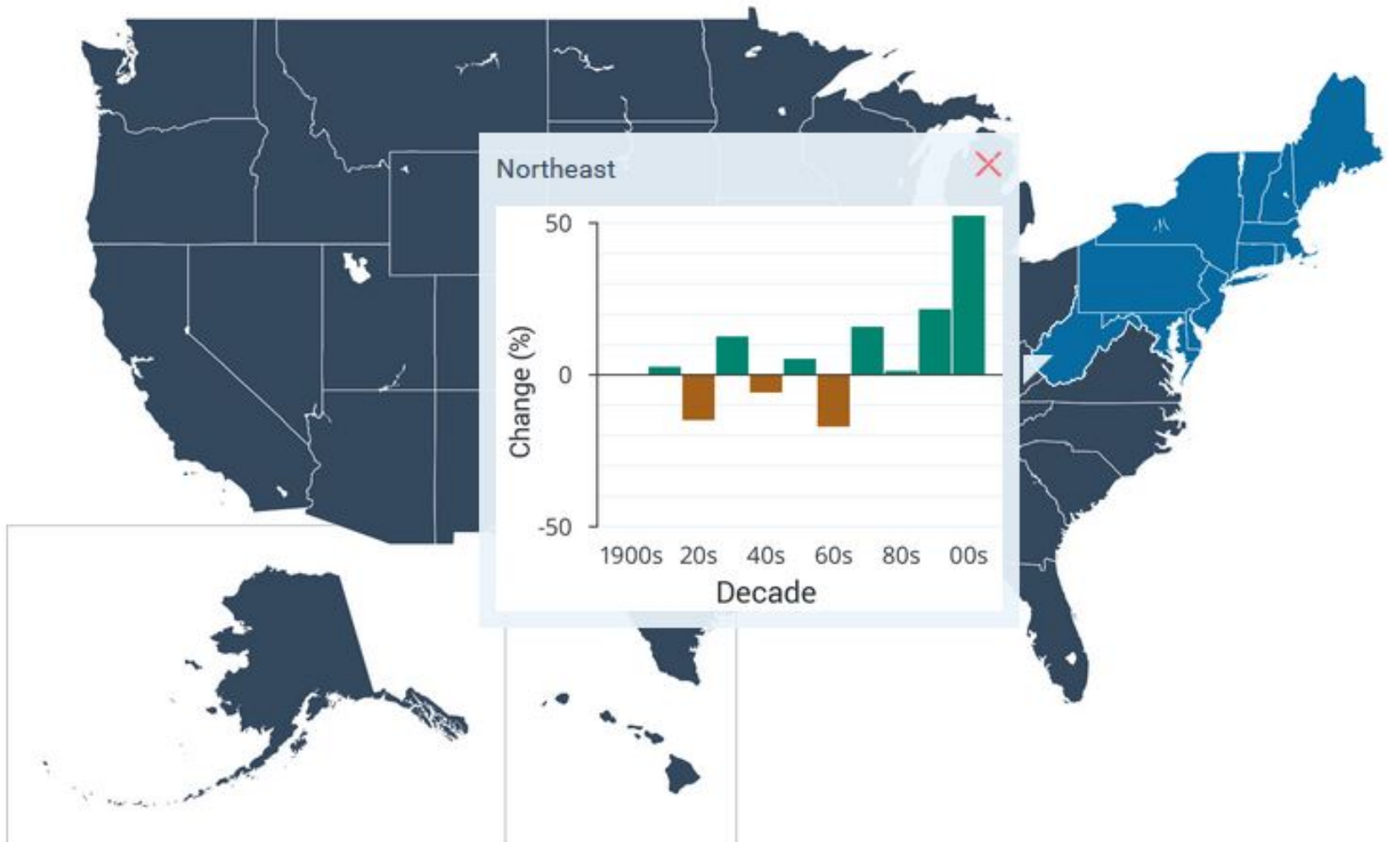
15 principles

Structured around three basic themes: science, equity, and common-sense ambition.

Designed to be used by decision makers and practitioners from the local to the federal level; and to articulate our science- and values-based approach.

[Use rigorous science

{ 1. Consider projected climate conditions.



{ 2. Use systems thinking



{ 3. Match scope of planning to magnitude of projected change



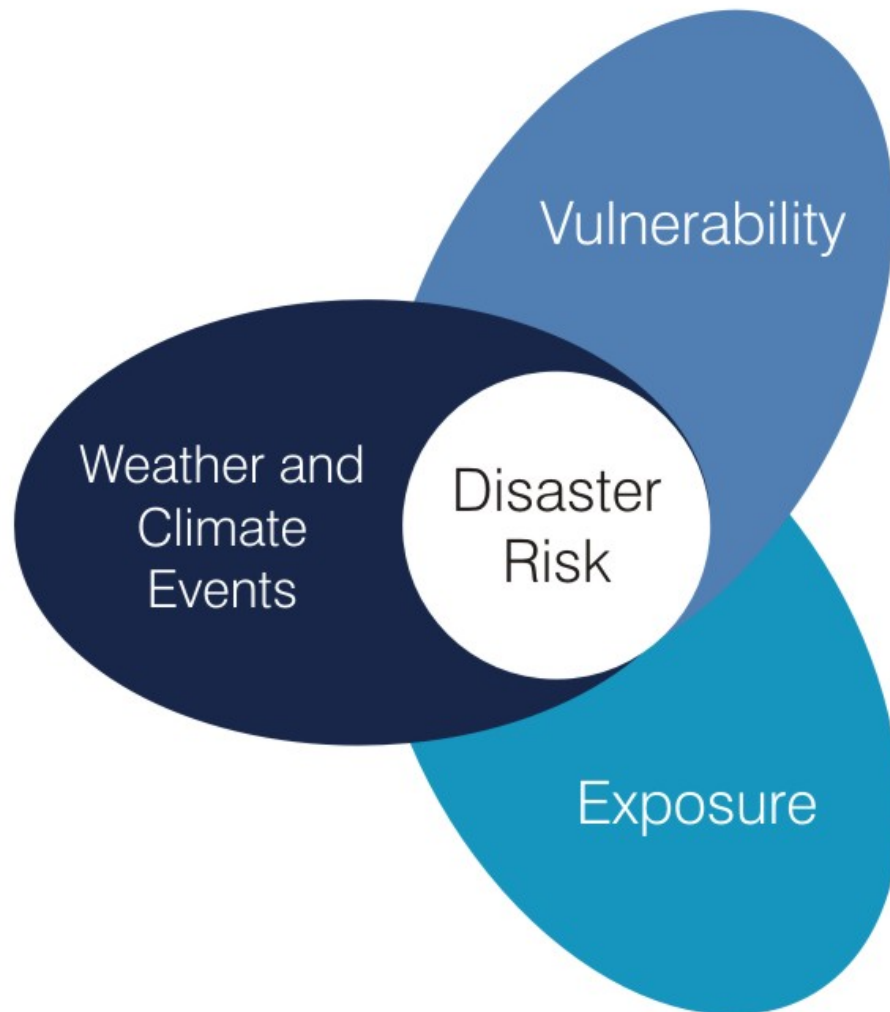
{ 4. Aim for robust decisions and policies



{ 5. Create opportunities to revise and change course



[Support equitable
outcomes



6. Ensure costs of responding to climate change and benefits of resilience-building are equitably shared



{ 7. Decide with, not for



{ 8. Minimize harm and maximize options



{ 9. Equip and empower local experts



{ 10. Maximize transparency, accountability, and follow-through



[Apply ambitious
common sense

{ 11. Weed out maladaptation, { both existing and proposed



{ 12. Consider the costs of inaction



{ 13. Work to protect the things citizens cherish



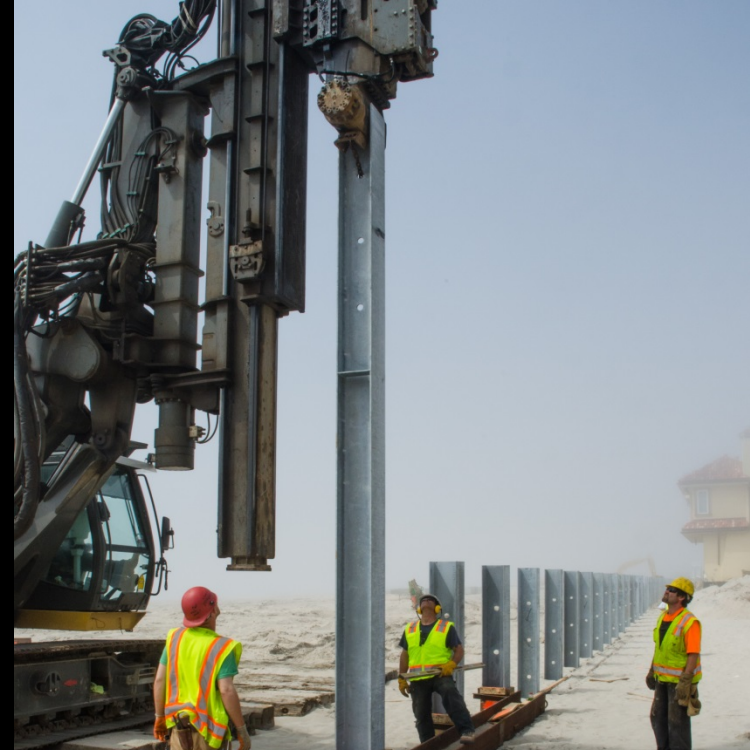
{ 14. Reflect a long-term vision



{ 15. Appreciate limits to adaptation and push mitigation



Adapt and Learn....





Thank You

Extra Slides

